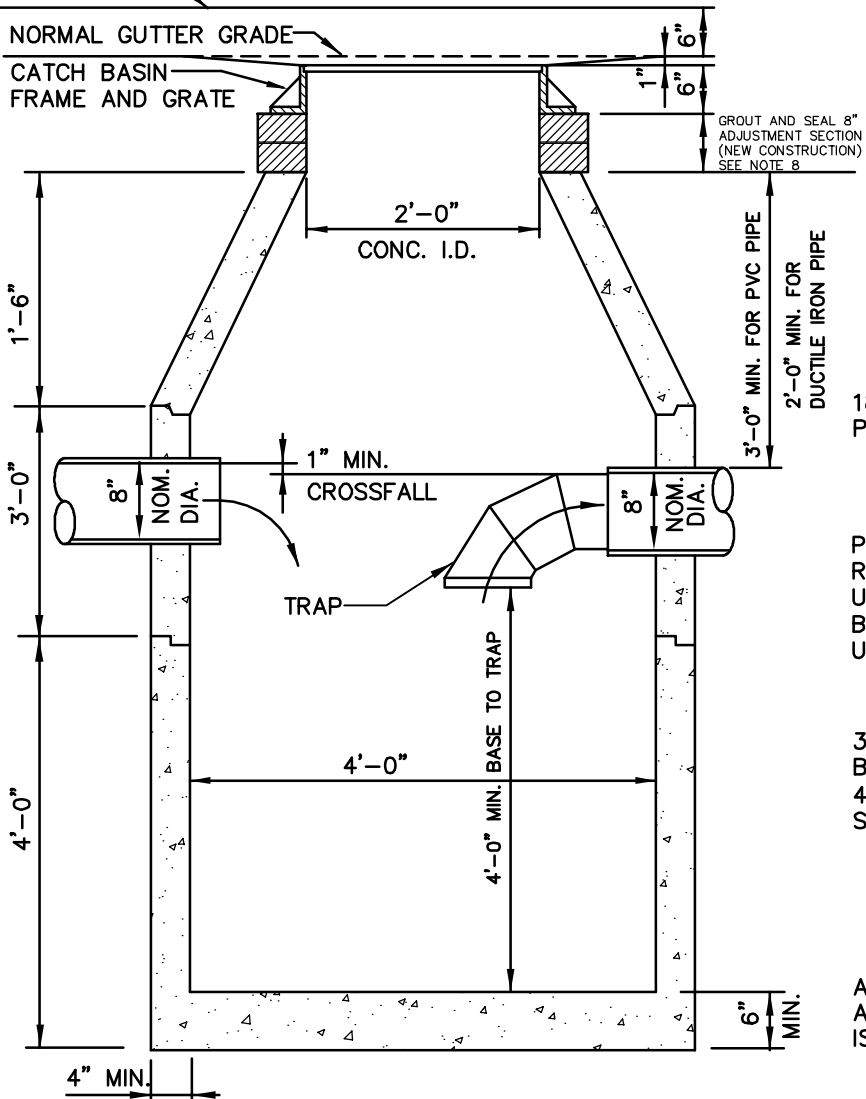


CURB GRADE

NORMAL GUTTER GRADE
CATCH BASIN
FRAME AND GRATE



GROUT AND SEAL 8" ADJUSTMENT SECTION (NEW CONSTRUCTION) SEE NOTE 8

3'-0" MIN. FOR PVC PIPE
2'-0" MIN. FOR DUCTILE IRON PIPE

18" CONCENTRIC CONE PRODUCT #4201

PIPE BLOCKOUTS CAN BE LOCATED PER REQUIREMENTS OF THE CONTRACTOR UPON PLACING ORDER, OR HOLES CAN BE PROVIDED BY THE CONTRACTOR UPON INSTALLATION.

3'-0" TALL BARREL WITH BLOCKOUTS # 4110
4'-0" TALL BASE SECTION # 4109

AT ALL JOINTS THE USE OF AN APPROVED BUTYL MASTIC IS RECOMMENDED.

CITY OF SPOKANE
STANDARD PLAN B-101C

NOT TO SCALE

WHITE BLOCK CO., INC.
CONCRETE · PUMICE · BUILDING PRODUCTS
QUALITY MANUFACTURER SINCE 1947
WWW.WHITEBLOCKCOMPANY.COM
6219 East Trent Spokane, Washington 99212-1280 509/534-0851 FAX 509/534-0854

CATCH BASIN TYPE 1

PRODUCT # 2014

SHEET
D-15
REVISED
02/25/08