

RISER RINGS AVAILABLE
PRODUCT #

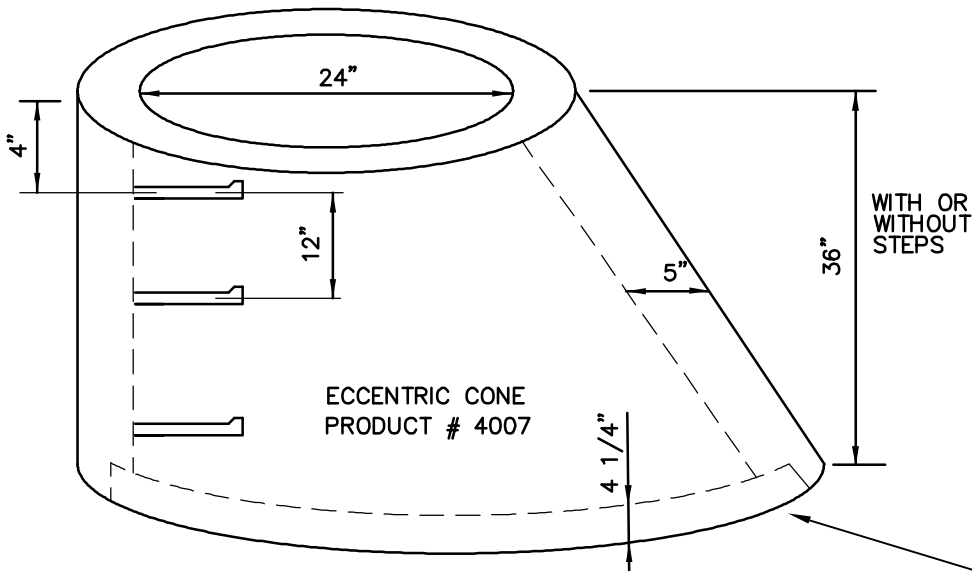
- 6" TALL # 6403
- 4" TALL # 6402
- 3" TALL # 6401
- 2" TALL # 6400

RISER RING

5" WALL A.S.T.M. - 478
REVERSE TONGUE AND
GROOVE

PRODUCT # 4008
CONCENTRIC CONE

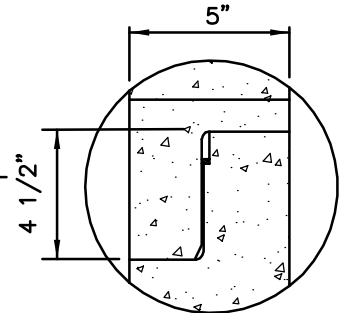
SEE PRODUCT # 4001 FOR
REINFORCED STREET LID



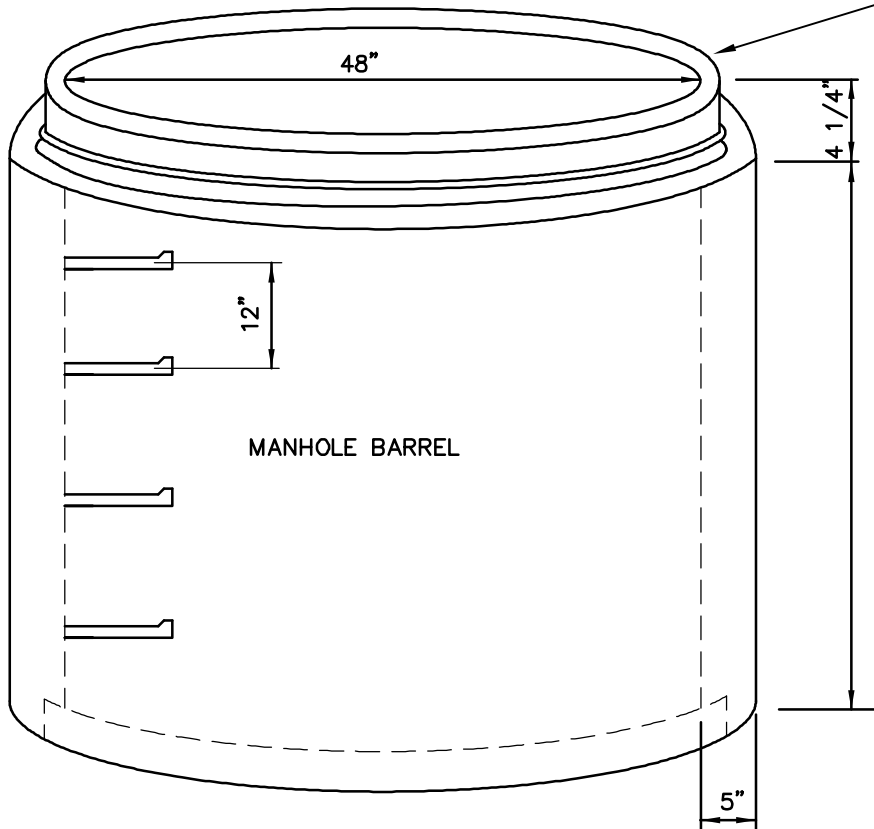
WITH OR
WITHOUT
STEPS

ECCENTRIC CONE
PRODUCT # 4007

GASKETED JOINT DETAIL



A.S.T.M. 443 AND
A.A.S.H.T.O. M198



BARRELS AVAILABLE:
PRODUCT #

- 5' TALL # 4011
- 4' TALL # 4009
- 3' TALL # 4005
- 2' TALL # 4003
- 1' TALL # 4000

WITH OR WITHOUT STEPS

SPECIAL HOLES
UPON REQUEST

NOT TO SCALE